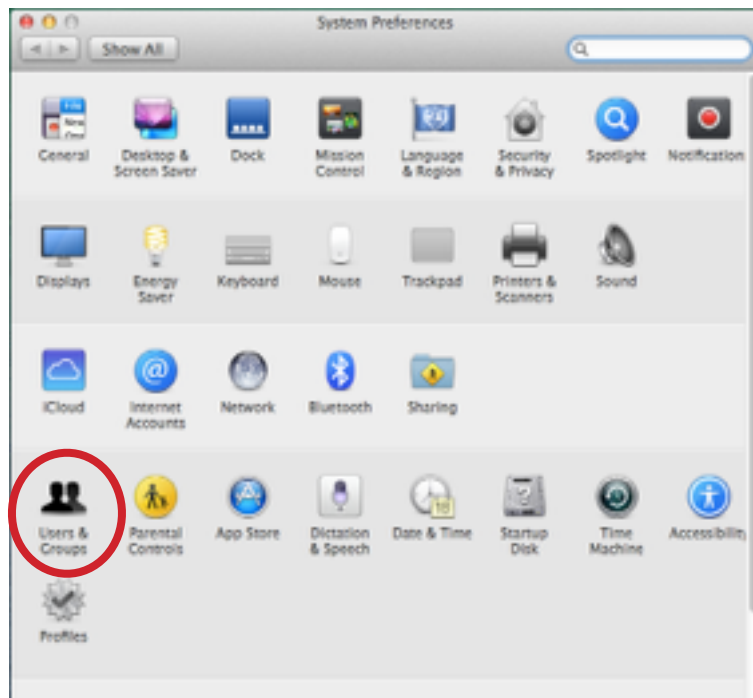
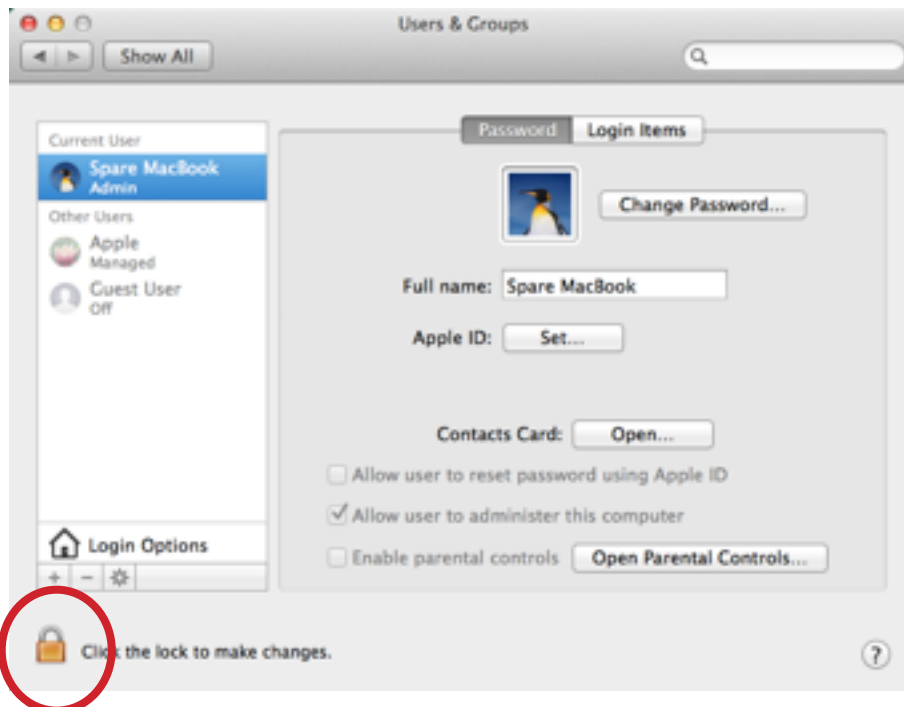


# How to Enable Parental Controls

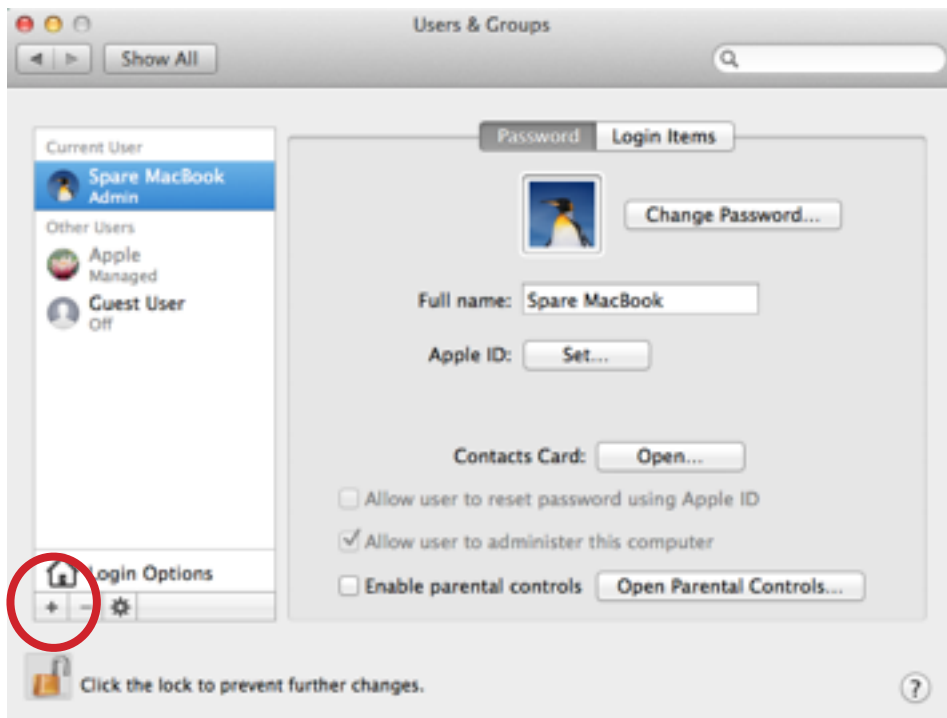
1. Go to System Preferences > Users & Groups.



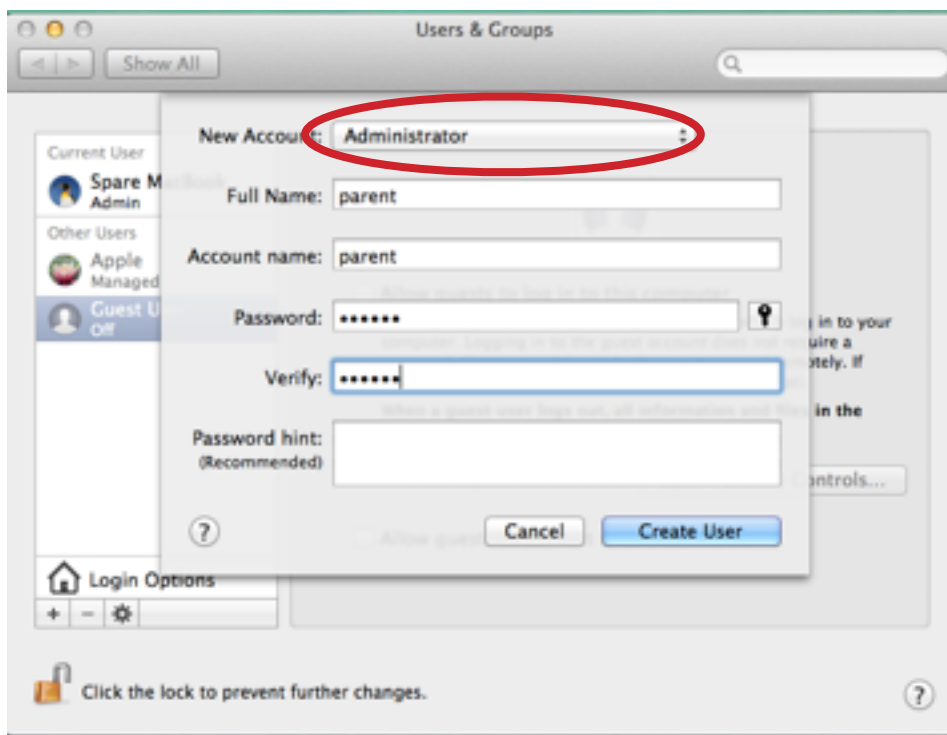
2. Click the Padlock in the bottom left and enter student password.



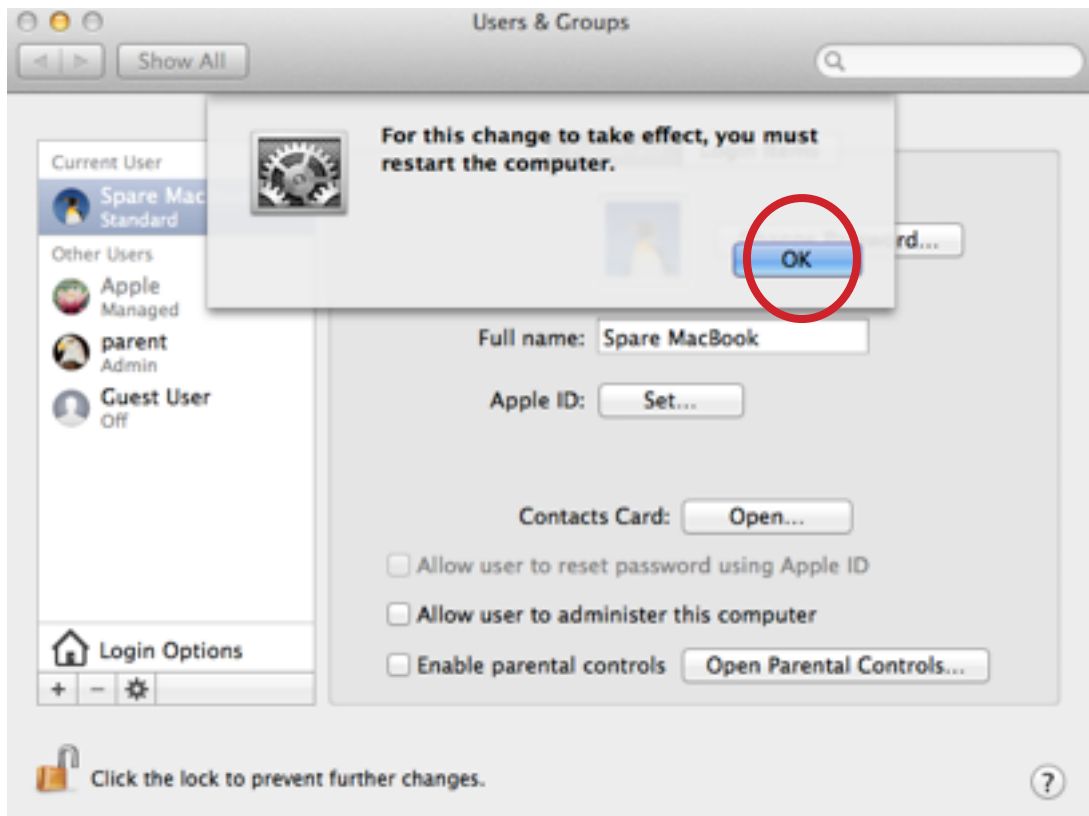
3. Create a new account by clicking +



4. Fill in details for parent account. Ensure the account type is 'Administrator'. Click Create User.



5. After creating the new account, log out by clicking the Apple logo in the top left and then Log Out.
6. Sign in as the new parent account.
7. Navigate back to System Preferences > Users & Groups. Unlock the Padlock in the bottom left.
8. Select the child's account, uncheck 'Allow user to administer this computer'. It will prompt you that you will need to restart for changes to take effect, click 'OK'.

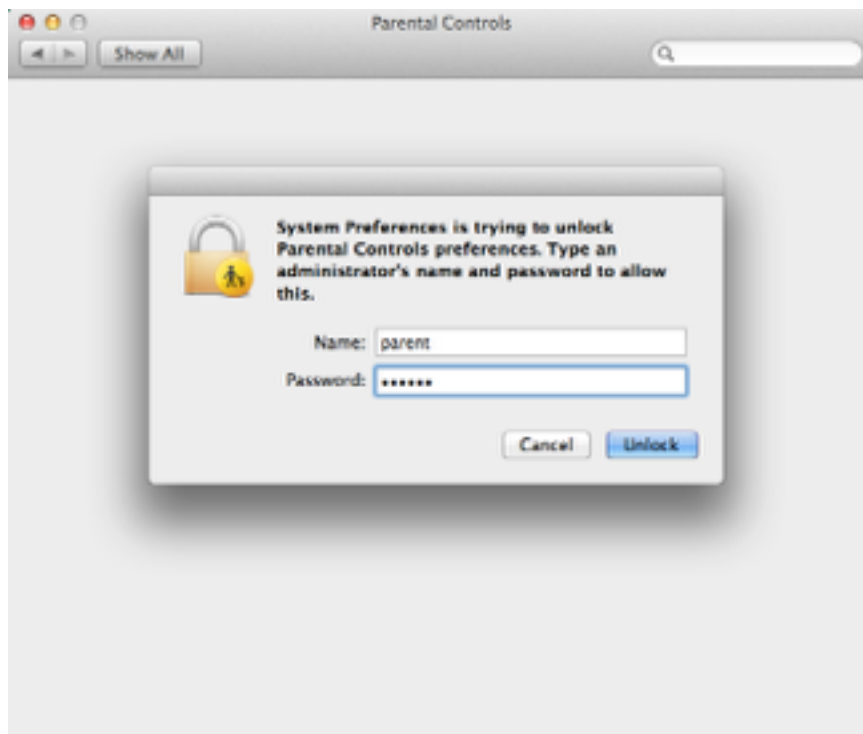


9. Check the box below that says 'Enable Parental Controls'.
10. Restart the computer by clicking the Apple logo in the top left and then restart.
11. Sign in as the child.

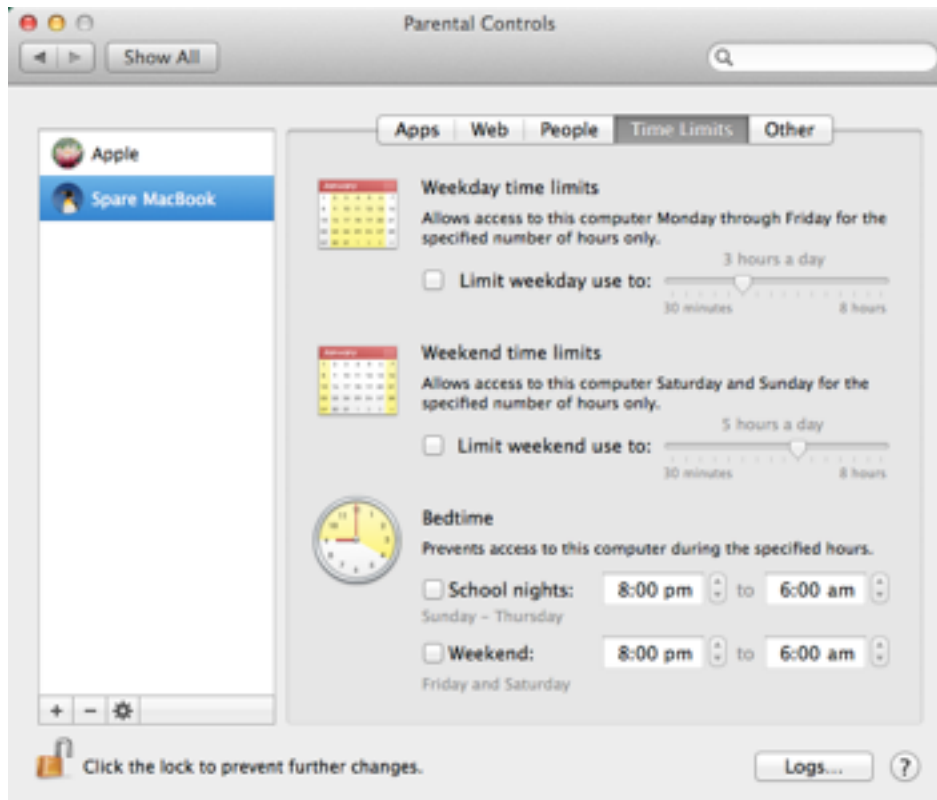
12. Go to System Preferences > Parental controls.



13. Type in the parent username and password. This will unlock parental controls.



14. Configure Parental Controls as required. One of the most popular is the 'Time Limits'.



15. After setting the Parental Controls be sure to click the Padlock again as this will lock the child out from changing the settings.

